

Kontrabass

Leila und Madschnun

nach dem persischen Liebesepos von Nizami

Suite für Streichorchester

Allegretto

♩ = 110

Joachim Johow

Arr:2014

1. **A**

pizz

10

1. 2. **B**

18

1. 2. **C**

26

D 1. 2.

33

E 1.

41

2. **F**

49

56

p

Kontrabass

Leila und Madschnun

Moderato

II.

Joachim Johow

♩ = 100

11 *f*

12 **A** *p*

21

28

35 **B**

43

51

61 **C**

68

74 *f*

80 **D**

Kontrabass

Leila und Madschnun

Moderato

♩ = 85 - 100

III.

Joachim Johow

8

pizz

14

20

A

26

arco

32

38

43

47

B

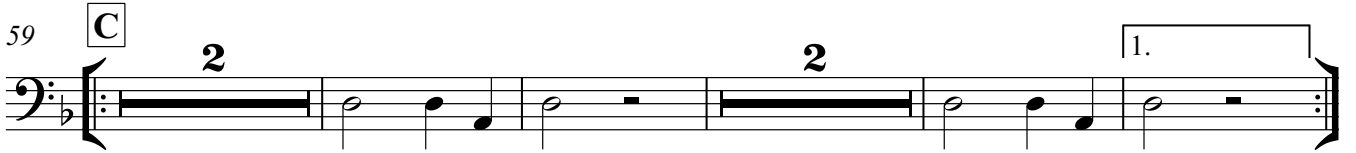
53

V.S.

53



59



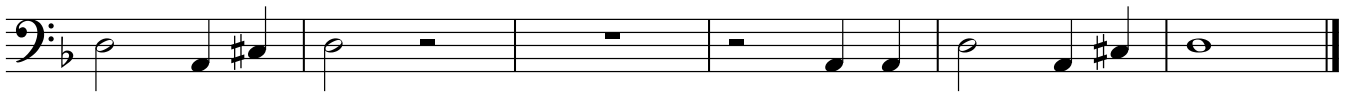
67



73



78



Leila und Madschnun

IV.

Joachim Johow

Allegro

$\text{♩} = 114$



5 **A**



13



21



29



37 **B**



46



54 **C** **Andante rubato**



62 D **Andante rubato**
3 3

71 3 3

79 **a tempo** E
arco

87

94 *pizz*

100 F

108

115 **2**
pp *ppp*

Contrabass

Leila und Madschnun

Allegro

V.

Joachim Johow

♩ = 146

4

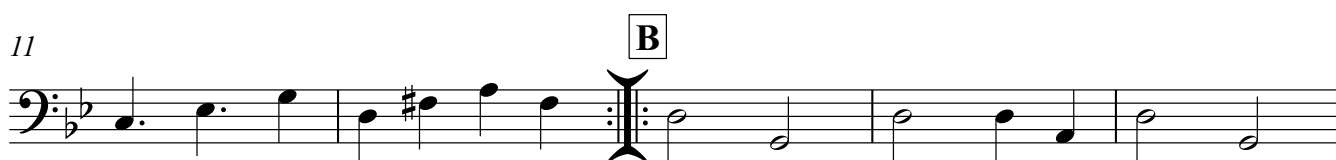


pizz

5 **A**



11 **B**



16



21 **C**



27

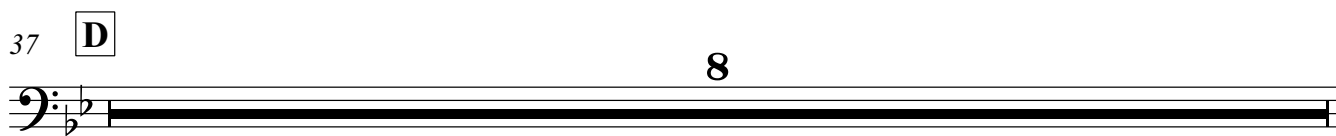


33



37 **D**

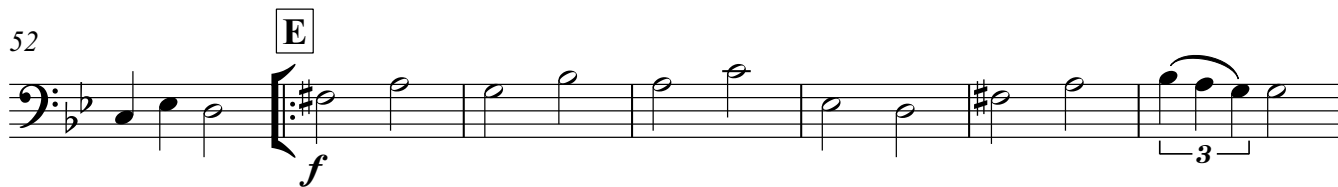
8



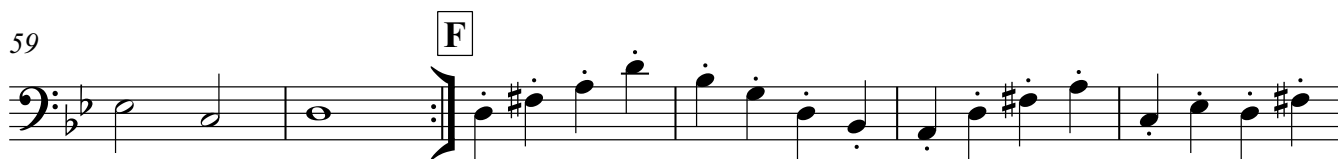
45



52



59



65



71

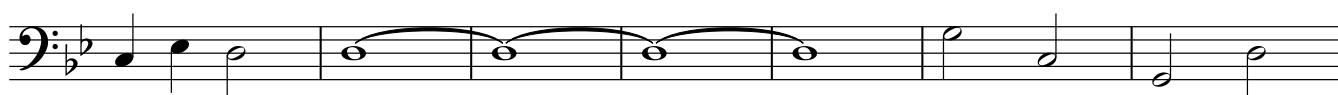


77

G



84



91

